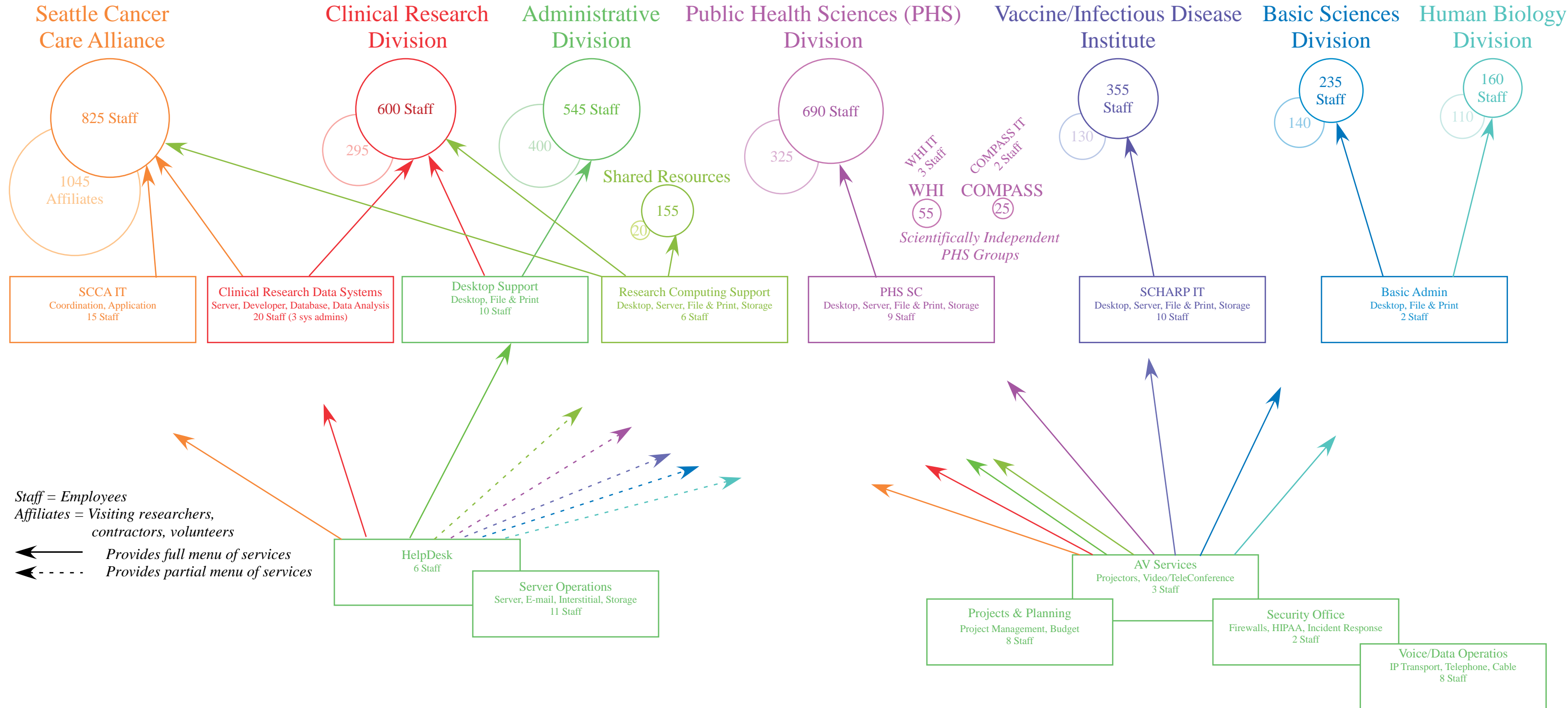


Deep Infrastructure IT Support at FHCRC

Desktop, File & Print, Storage, E-mail, Interstitial (Authentication, DHCP, DNS, NTP, mail relay), IP Transport, Security, Telephones
 (Does not include software development, database design, or data analysis support)



Staff = Employees
 Affiliates = Visiting researchers, contractors, volunteers
 ← Provides full menu of services
 ← - - - Provides partial menu of services

Notes
 * Scientifically Independent and Semi-Independent PHS Groups fund IT staff extramurally; other IT groups are funded mostly or entirely from intramural funds.
 * WHI acquires Internet-access, telephone, and cabling support from VDOPS; otherwise they are entirely independent, IT-wise
 * SCHARP manages its own e-mail post offices, DHCP, and Authentication